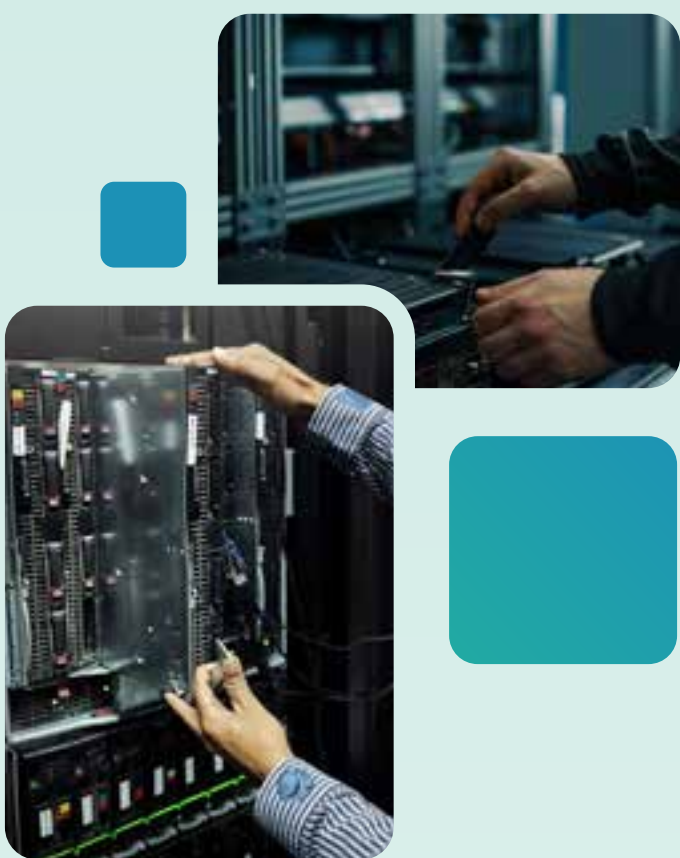


# IT Support Service

by Alphamatic Systems



## ■ What is an IT support service?

An **IT support service** provides professional assistance to manage, maintain, and troubleshoot your business’s IT systems, including hardware, software, networks, and cloud infrastructure. It ensures smooth operations, prevents downtime, and safeguards critical data.

## ■ Why does your business need IT support service?

Even minor IT issues can disrupt daily operations, affect productivity, and risk security. A reliable IT support service ensures problems are addressed quickly, systems remain secure, and your business continues running without interruption.

## Alphamatic IT Support Service Offerings

Alphamatic Systems offers enterprise-grade IT support services tailored to your business needs:

- **Managed IT Service:**  
24/7 monitoring and proactive maintenance to prevent IT disruptions.
- **SupportPlus Incident Support:**  
Fast, SLA-based resolution for hardware, software, and network issues.
- **Contractual IT Service:**  
Unlimited online and phone support for predictable IT coverage.
- **Professional Project Services:**  
Assistance with system upgrades, new deployments, and IT infrastructure projects.

## ■ Benefits of Alphamatic IT Support Service

**Reduce downtime:**  
Rapid response and issue resolution keep operations running smoothly.

**Comprehensive coverage:**  
Support for servers, desktops, networks, and cybersecurity.

**Cost-effective:**  
Flexible plans with predictable IT budgets.

**Expert team:**  
Certified engineers with extensive experience.

**Integrated solutions:**  
Works seamlessly with Backup as a Service (BaaS), Disaster Recovery as a Service (DRaaS), and managed cloud services.

## FAQs

### About IT Support Service

- **Can Alphamatic handle multi-vendor systems?**  
Yes, SupportPlus covers multi-vendor environments.
- **Is cloud backup included?**  
Yes, IT support integrates with BaaS and DRaaS solutions.
- **How fast are issues resolved?**  
SLA-based support ensures quick response and resolution times.

With Alphamatic’s **IT support service**, your business IT systems are professionally monitored, maintained, and protected.

[Read more>](#)

**ALPHAMATIC SYSTEMS SDN BHD**

Excellent Service Is Our Promise



Copyright © Alphamatic Systems Sdn Bhd 2025. All Rights Reserved.

Wisma Alphamatic, No. 22-18, Jalan Puteri 4/2,  
Bandar Puteri, 47100 Puchong, Selangor, Malaysia.



Tel: 03-8060 3836



Fax: 03-8061 6839